



THE BELLEVUE COLLECTION. YOUR ULTIMATE HOST.

Connect to It All in Bellevue, Washington. Local-to-Global Hospitality, Dining, Entertainment & Shopping—All in One Place.





Bellevue Arts Museum



Wine Tasting in Woodinville



The Golf Club at Newcastle



Chihuly Garden, Glass Museum, Space Needle & Pike Place Market



Bellevue and Beyond.

THE EASTSIDE. A BEAUTIFUL BLEND.

Bellevue sits on the edge of Lake Washington, just eight miles east of downtown Seattle. The Eastside reflects our entrepreneurial spirit, our desire to be bold and to be better. Downtown Bellevue benefits from that desire to have it all—and all in one place... Inspired. Easy. And accessible.

Connect instantly to our world-class urban and inspiring natural delights. Within a 20-minute radius, the possibilities are endless.

Local Interests & Highlights In Downtown Bellevue

- The Bellevue Collection is the cultural heartbeat of the greater Eastside
- Award-Winning Bellevue Downtown Park
- Bellevue Arts Museum
- Bellevue's Meydenbauer Bay Waterfront Park and Lake Washington
- KidsQuest Children's Museum
- Bellevue Botanical Garden
- Future home of the Performing Arts Center Eastside (PACE) located adjacent to The Bellevue Collection

Near Bellevue

- Sea-Tac International Airport 16.9 Miles
- Woodinville Wine Tasting: Sample award-winning wines from over 120 of Washington's finest tasting rooms 11.5 Miles
- The Golf Club at Newcastle: 36 Holes of championship golf, framed by panoramic views of Lake Washington, Mt. Rainier, the Olympic and Cascade Mountains 8.5 Miles

Seattle's Iconic Attractions

(All Approximately 10 Miles from The Collection)

- Pike Place Market
- Seattle Center & Space Needle
- The Chihuly Garden and Glass Museum
- Seattle Art Museum
- Seattle Aquarium
- MoPOP
- Woodland Park Zoo



©Aerolistphoto.com



City Within a City.

THE BELLEVUE COLLECTION —
YOUR PREMIER EASTSIDE MEETING
LOCATION IN DOWNTOWN
BELLEVUE, WASHINGTON.

BREATHTAKING & BOLD.

The Bellevue Collection frames the dramatic landscape of downtown Bellevue with its sleek synergistic and integrated urban design. It's a breathtaking juxtaposition of Pacific Northwest beauty blended with vibrant, cosmopolitan energy. Connect to your ultimate host destination—a 6-million-square-foot, state-of-the-art hospitality, dining and shopping district, all conveniently connected by three pedestrian sky bridges—just steps from our three luxe hotels.

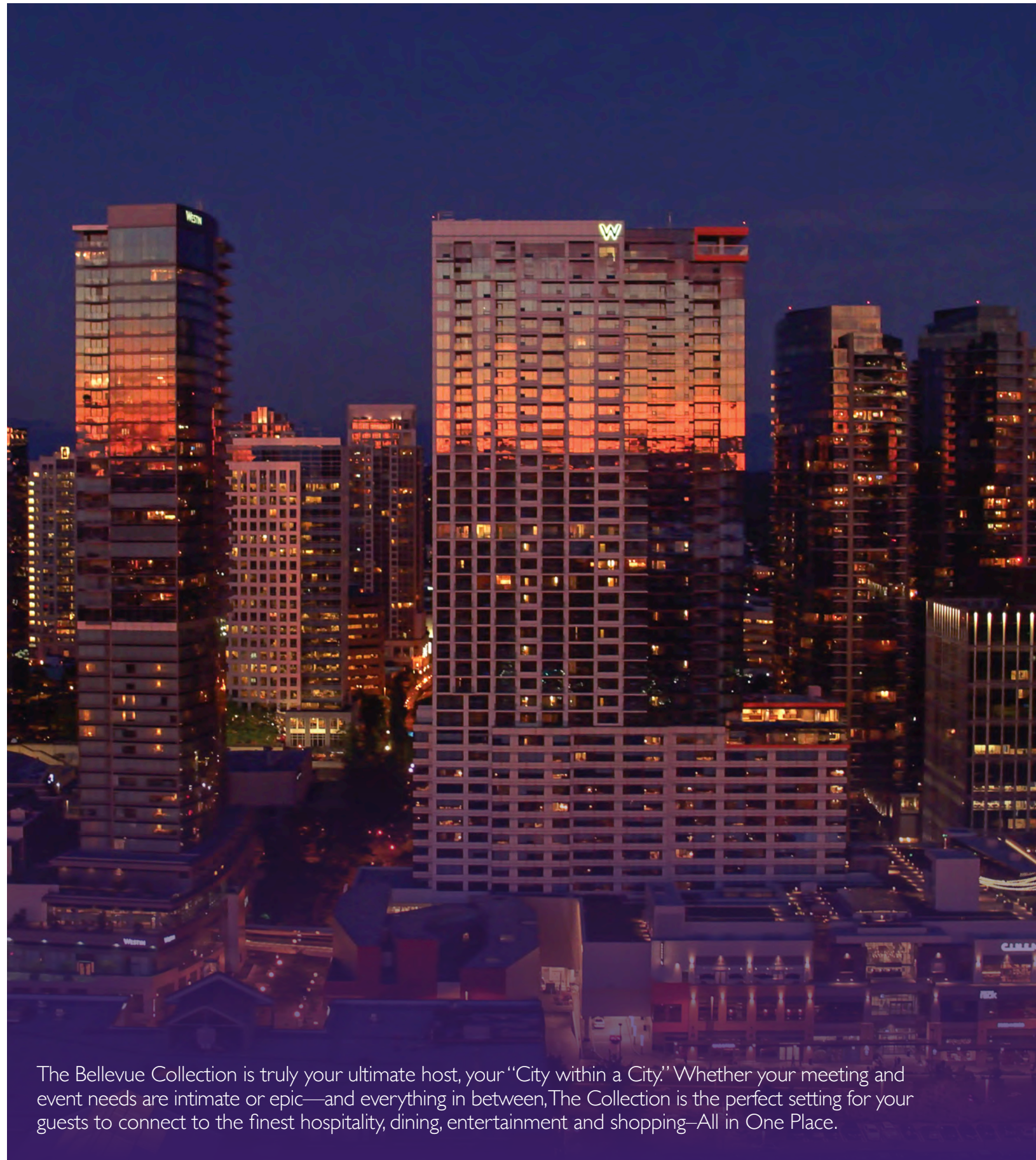
'The Collection' hosts everything from small to large meeting events within its pristine and perfectly-sized streetscape setting—an inspired mix of downtown meets resort destination.

- 1,315 Luxury and Modern Guest Rooms between three on-site hotels
- Staggering array of meeting venues
- Dining district with 50+ local-to-global restaurants, nightlife and entertainment options
- Over 200 retail shops
- One effortless, safe and sophisticated location
- Located just minutes from the Pacific Northwest's most iconic and innovative attractions

The Bellevue Collection is truly your ultimate host, your City within a City. Whether your meeting and event needs are intimate or epic—and everything in between, The Collection is the perfect setting for your guests to connect to the finest hospitality, dining, entertainment and shopping—and, more importantly, to their audiences and each other. It's all about connection, ease and inspiration at The Bellevue Collection.

Everything you need—all in one place.





The Bellevue Collection. Your Ultimate Host.

6 MILLION SQUARE FEET OF DYNAMIC PLACE-MAKING—*SYNERGY WITH STYLE, WORKING FOR YOUR CUSTOMER.*

The Bellevue Collection is the largest Hospitality, Dining, Entertainment and Shopping District in the Pacific Northwest. We deliver a fresh, cosmopolitan fusion for our guests—an energetic city vibe, without the traditional urban hassle. Seamlessly connected to our three luxe hotels is an unparalleled and inspired mix of local-to-global dining, nightlife and entertainment, plus over 200 retail shops that serve local to international customers.

3 ICONIC HOTEL EXPERIENCES

Hyatt Regency Bellevue, The Westin Bellevue and W Bellevue offer a vital and vibrant hospitality component for The Bellevue Collection, the Eastside and the Pacific Northwest. Each hotel adds its own unique voice, experience and set of services & amenities for guests—from individuals to group meetings and events. We make it effortless for your guests to innovate, get inspired and get down to business—with *plenty of options to bring the fun.*

UNPARALLELED CONNECTIVITY

The Collection offers the most seamless connection for groups and events that you won't find anywhere else. Three state-of-the-art covered sky bridges connect all three hotels' second level ballrooms, making large meeting transitions a breeze.

The Bellevue Collection is truly your ultimate host, your "City within a City." Whether your meeting and event needs are intimate or epic—and everything in between, The Collection is the perfect setting for your guests to connect to the finest hospitality, dining, entertainment and shopping—All in One Place.





The Collection.

Accommodations + Convention Amenities At-a-Glance.



HYATT REGENCY BELLEVUE

A PLACE TO CONNECT, ENERGIZE AND COLLABORATE.

Hyatt Regency Bellevue is your “One Stop Experience...” A singular and service-centric destination all to its own, this spacious and contemporary location offers a stunning array of services and amenities with a savvy variety of meeting & event venues. The Hyatt Regency anchors an entire block of The Collection with immediate connections to a variety of restaurants, nightlife, entertainment, galleries and personal services. It’s all about being smart, versatile and visionary.

bellevue.regency.hyatt.com

THE WESTIN BELLEVUE

BRING ON THE BALANCE... RELAX, REVIVE & RENEW.

At the very center of The Collection rises The Westin Bellevue, with immediate access to dining, entertainment and shopping. Designed as a modern escape, The Westin provides a sense of wellness, discovery and renewal to their guest experience, with an abundance of modern meeting and event spaces available to professional groups of all sizes. The perfect partnership for all of your guest needs.

westinbellevuehotel.com

W BELLEVUE

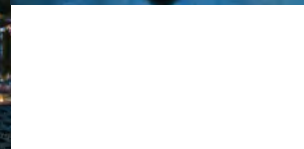
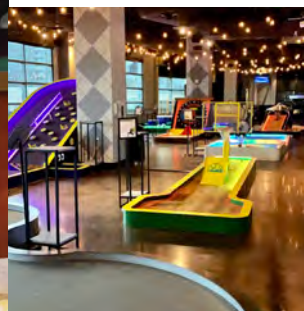
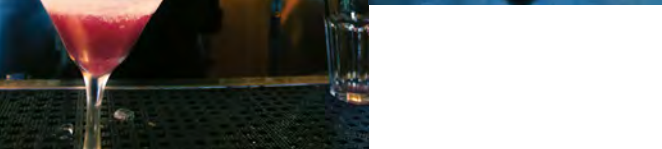
WHAT'S NEW & NEXT... MODERN, MAGNETIC & SPONTANEOUS.

The W Bellevue brings a game-changing energy to The Collection, Downtown Bellevue and The Eastside with its bold, “modern luxury” approach to the guest experience... W Bellevue hosts a playful, insider perspective to Eastside hospitality—with its clever and sometimes irreverent take on all things local. For groups and events, W Bellevue will bring a vibrant and daring setting for your next meeting or event.

wbelleuve.com

	Hyatt Regency Bellevue	The Westin Bellevue	W Bellevue	Total Collection-Wide
Guest Rooms	732	337	245	1,314
Suites	39	27	25	91
Meeting Rooms	35	23	11	69
Largest Meeting Room/ Banquet Seating Capacity	17,745 sf / 1,450 seats	7,273 sf / 450 seats	4,500 sf / 300 seats	29,518 sf/ 2,200 seats
Total Event Space	70,000 sf	27,000 sf	10,000 sf	107,000 sf
Pre-Function Space	20,279 sf	10,000 sf	2,344 sf	32,623 sf
Unique Spaces / Capacity	Auditorium 135	Cypress 85	The Living Room 125	





The Collection

Eats. Sips.
Mingles & Plays.

LOCAL-TO-GLOBAL DINING,
NIGHTLIFE & ENTERTAINMENT
ENERGIZES THE EASTSIDE'S SOCIAL
SCENE—ALL IN ONE PLACE.

50+ Restaurants, nightlife and entertainment options along with 30 quick-serve venues make The Bellevue Collection the ultimate go-to dining district for your clients, easily accessible—all just steps away from each of our hotels. You'll find a staggering variety—from locally sourced, farm-to-table, to global fare for every taste.

Over 25 of our restaurants offer the opportunity to reserve partial or entire venues for private meetings and events.

Our most iconic dining destination is the breathtaking Ascend Prime Steak & Sushi where you can experience Bellevue's best 360 degree views with an unparalleled dining experience from the 31st floor and multiple balconies. Ascend Prime has extensive private dining space for meetings and special events that can accommodate flexible group sizes with the most stunning views in the region.





The Collection's Dining District.

Private Event Capacity

Venue	Guest Capacity (Min/Max)
13 Coins Restaurant	10 / 225
Ascend Prime Steak & Sushi	10 / 500
Baron's Sino Kitchen & Bar	12 / 26
Cantina Monarca	Coming 2022
Central Bar	30 / 135
Civility & Unrest	60 / 175
Cypress Lounge & Wine Bar	10 / 85
Daniel's Broiler	20 / 335
Din Tai Fung	16 / 60
Duke's Seafood	24 / 34
Earls Kitchen & Bar	28 / 160
Living Room Bar and The Porch	10 / 150
Maggiano's Little Italy	230 / 300
Paddy Coyne's Irish Pub	30 / 100
STK Steakhouse	20 / 55
Suite Restaurant/Lounge	125 / 300
Tavern Hall	25 / 500
The Lakehouse	12 / 180
Water Grill	Coming 2022
Wild Ginger	10 / 45

ENTERTAINMENT VENUES

Cinemark Lincoln Square	30 / 150
Forum Social House & TopGolf Suites	58 / 628
Lucky Strike Lanes/Power Play	8 / 1200 (full buyout)





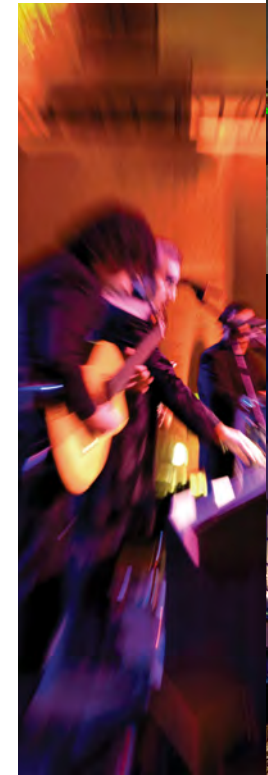
Your Entertainment & Nightlife Adventures are Here.

Connect to the fun—just steps away from our hotels & restaurants.

If you're looking for a place to unwind and experience the local cocktail culture, The Collection has a delicious and decadent variety of venues that offer everything from lively happy hour scenes to late night adventures, including live music, DJs and dancing—or just a quiet nightcap at W Bellevue's stylish speakeasy, Civility & Unrest.

After a day of meetings and making connections, The Collection offers two cinema experiences for movie buffs to unwind and escape—Cinemark Lincoln Square Cinemas with 16 theaters and our newest, luxe Cinemark Reserve with 6 reserve-only-seat theaters—where guests can lounge, eat and sip cocktails while taking in the latest flicks.

If you're looking to laugh, let it all out, or roll up your sleeves and play, you're in luck. The Collection offers venues for TopGolf swing suites and interactive games, bowling, billiards, minigolf and more. And best of all, no need to Uber back to your hotel after fun and games, you are just steps from your room, thanks to our convenient pedestrian sky bridges. Everything you desire—All In One Place.





Shopping? We've Got it! The Largest Global Selection in The Pacific Northwest.

Find your Looks, Likes and Loves.

Explore over 200 shops, featuring a smart and savvy variety for customers looking for the latest, on-trend fashions (casual to luxe), featuring one of Nordstrom's finest stores, a flagship Apple location, plus reinvented retail experiences from Tesla and Soul Cycle. Everything you could possibly want or need is just a sky bridge away from our three hotels.

Efficient. Easy. Elegant. And fun. The Collection's rare "City within a City" setting with its diverse and innovative culture—the perfect solution for your next meeting event. No matter the size, you are invited!





CONNECT TO IT ALL—EFFORTLESSLY.

The City Within a City... The Bellevue Collection.

For your next meeting or event, The Bellevue Collection is your ultimate host for:

Executive Meetings • Business Retreats • Customer and Partner Events • Employee Events and Meetings • Morale Events • Annual Meetings • Conferences
 Side Meetings • Activities • Incentive Programs • Product Launches • Trade Shows Technology Training • Sales Off-Sites • Training and Development • Networking Events

575 Bellevue Square, Bellevue, WA 98004 Just minutes from downtown Seattle in Bellevue, Washington.

For more information, visit: bellevuecollection.com/meetings

